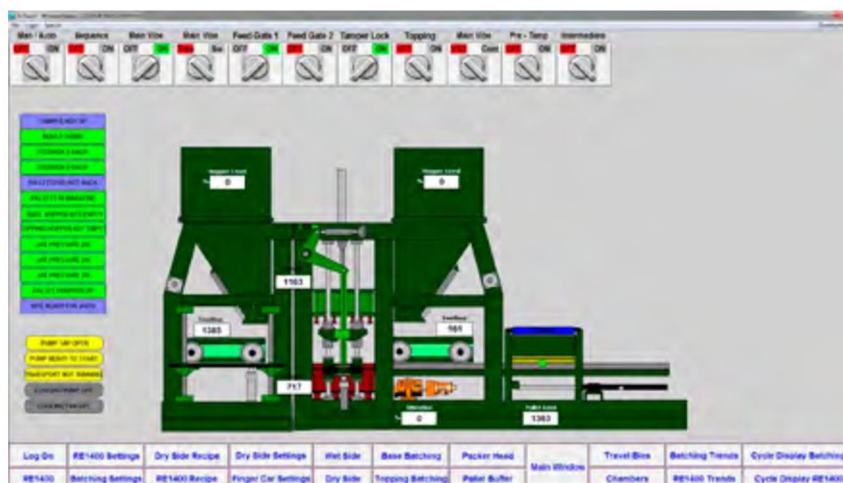




New technology improves efficiency on tried-and-trusted equipment



Part of the SCADA system which displays graphics of machine operation and increases productivity.

Cape Brick remains the longest-running manufacturer of the most energy-efficient and environmentally-friendly quality concrete masonry products in the Western Cape, and is committed to customer service excellence and product innovation.

A major contributing factor to this ongoing success is maintaining long-standing relationships partners such as Pan Mixers South Africa (PMSA) – the largest supplier of concrete brick, block and paving making machinery in Africa, which has remained the equipment supplier-of-choice to Cape Brick’s Philippi manufacturing plant for over 15 years.

Cape Brick MD Anthony Gracie says the company recently added a supervisory control and data acquisition (SCADA) system, which serves the mixing and block plants on an integrated platform. “The SCADA system displays visual, animated graphics of machine operation, machine parameter control and data capture. It has proven to be indispensable as its advanced and interactive efficiency increases daily production by between 10 and 20%.”

Another innovative PMSA concrete solution supplied recently to Cape Brick is the FL Ludwig wall scraper mounted probe, which ensures highly-consistent water dosing in the mixture, producing more predictable concrete.

“The most important thing in this industry must be the predictability of the concrete, as the plants are susceptible to changes in moisture content. If the water is consistent, the concrete will be too,

and this tool enables precise humidity monitoring in process flows, which ultimately results in the plants running more consistently,” Gracie explains.

PMSA sales and marketing manager Quintin Booysen says: “PMSA prides itself on its equipment standards and long-lasting business relationships. This is reflected in the fact that our relationship with Cape Brick continues to grow, even after 15 years.”

Gracie indicates that Cape Brick experienced a 30% growth in turnover in 2014, and anticipates similar success in 2015. “The industry is looking good, and we are remaining competitive by maintaining a high output of a diverse range of superior-quality products. PMSA has been a vital partner in our ongoing success,” he concludes.

About Pan Mixers SA

Pan Mixers SA is a leading manufacturer of a wide range of concrete block, brick and paving machinery, turbine and counter-current pan mixers and batching plants for the Concrete, Refractory and Ceramic industries. Pan Mixers have been servicing the needs of local and overseas customers since 1976. PMSA brick-making machinery, in the Johannesburg area alone, produces 2,000,000 bricks per day. ■

More information from Quintin Booysen,
Tel: +27(0)11 578 8700
www.pmsa.com