



CONCRETE SOLUTIONS FOR UNDERGROUND CONSTRUCTION PROJECTS

Underground mining operations in South Africa can undertake numerous construction projects swiftly and cost-effectively, by making use of a range of concrete-placer pumps manufactured locally by SEM Concrete Pumps, which forms part of the PMSA group of companies.

SEM general manager, Sarika Lutchman, points out that SEM specialises in the manufacture of concrete-placer pumps that are specifically designed for use in underground mining applications.

"SEM concrete placer-pumps are air-operated, making them ideal for underground mining applications."

Lutchman notes that SEM concrete-placer pumps are used in underground mines for several applications, which include shaft-sinking and lining, the construction of ore passes, dam walls or settlers, foundations and support structures.

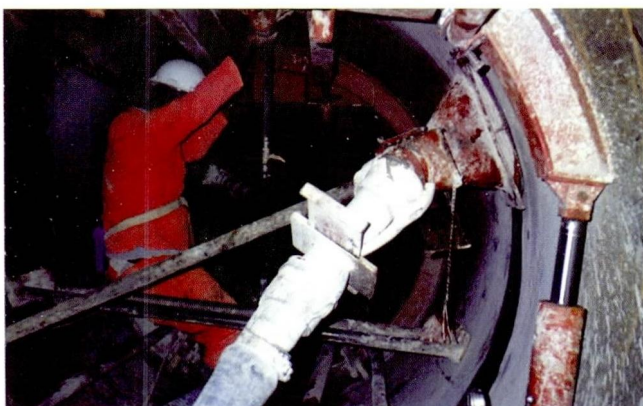
SEM concrete placer-pumps include the wheel-guided SEM 100 with a 100l per-batch capacity, a maximum output of 6m³ per hour and a maximum pumping distance of 100m horizontal or 18m vertical.

"With a headspace of 140cm and a weight of just 235kg, the SEM 100 is easily transportable, even in the most restricted areas. The SEM 100's impressive production output, combined with its compactness and ease-of-use, has proven particularly popular among the largest names in the mining industry," notes Lutchman.

The second model in the SEM concrete placer pump range is the SEM 250, which has a 250 litre capacity-per-batch, a maximum output of 19m³ per hour and a maximum pumping distance of 150m horizontal or 18m vertical.

"The SEM 250 is generally used where relatively large outputs are required, but where headroom or access is restricted underground. The SEM 250 is supplied either on a fixed stand or on a two-wheel site trailer," Lutchman advises.

For further information contact Quintin Booysen on 086 100 7672 or on quintin@panmixers.co.za. Web: www.pmsa.com



Underground concrete pumping.