

## More effective plant management

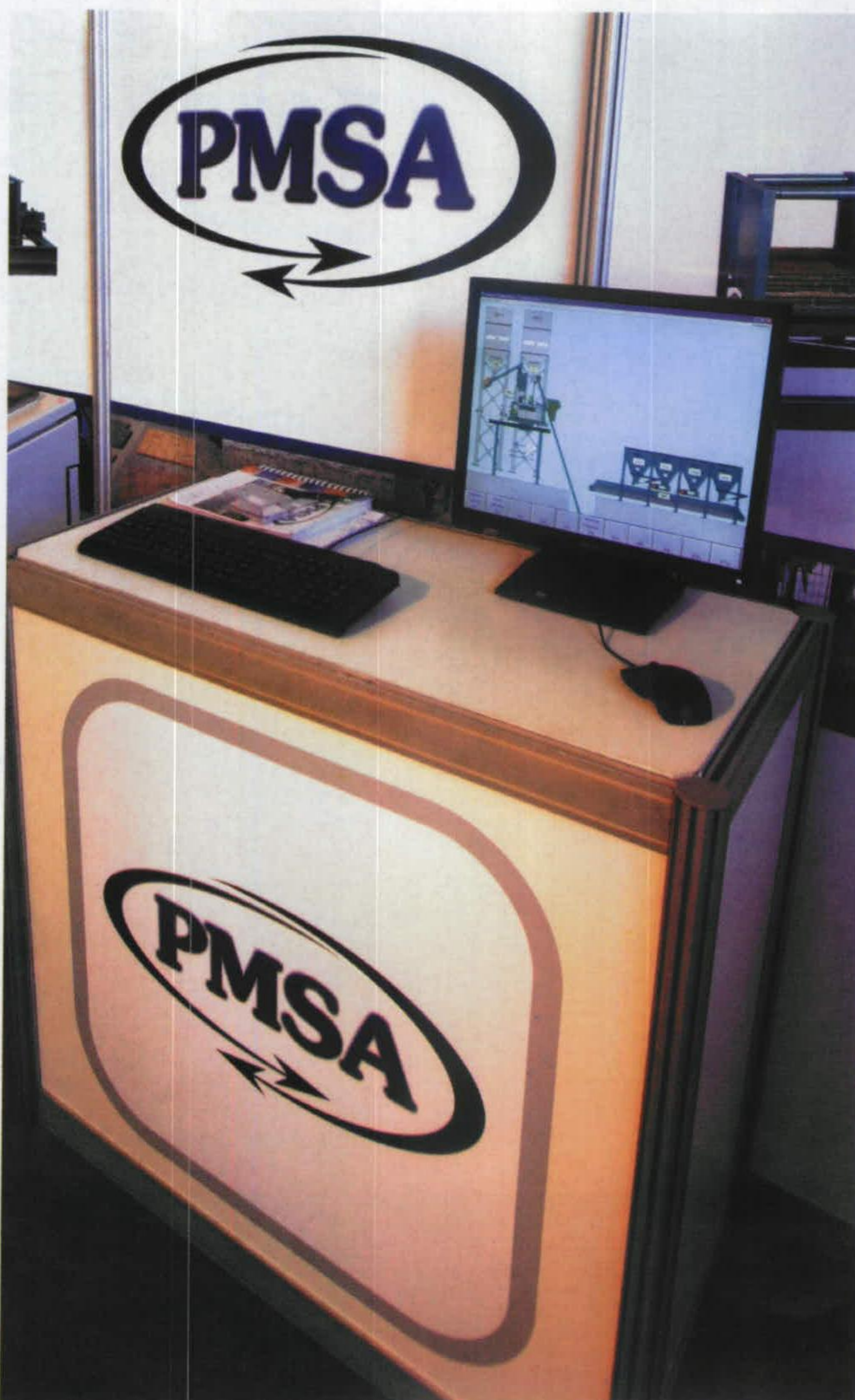
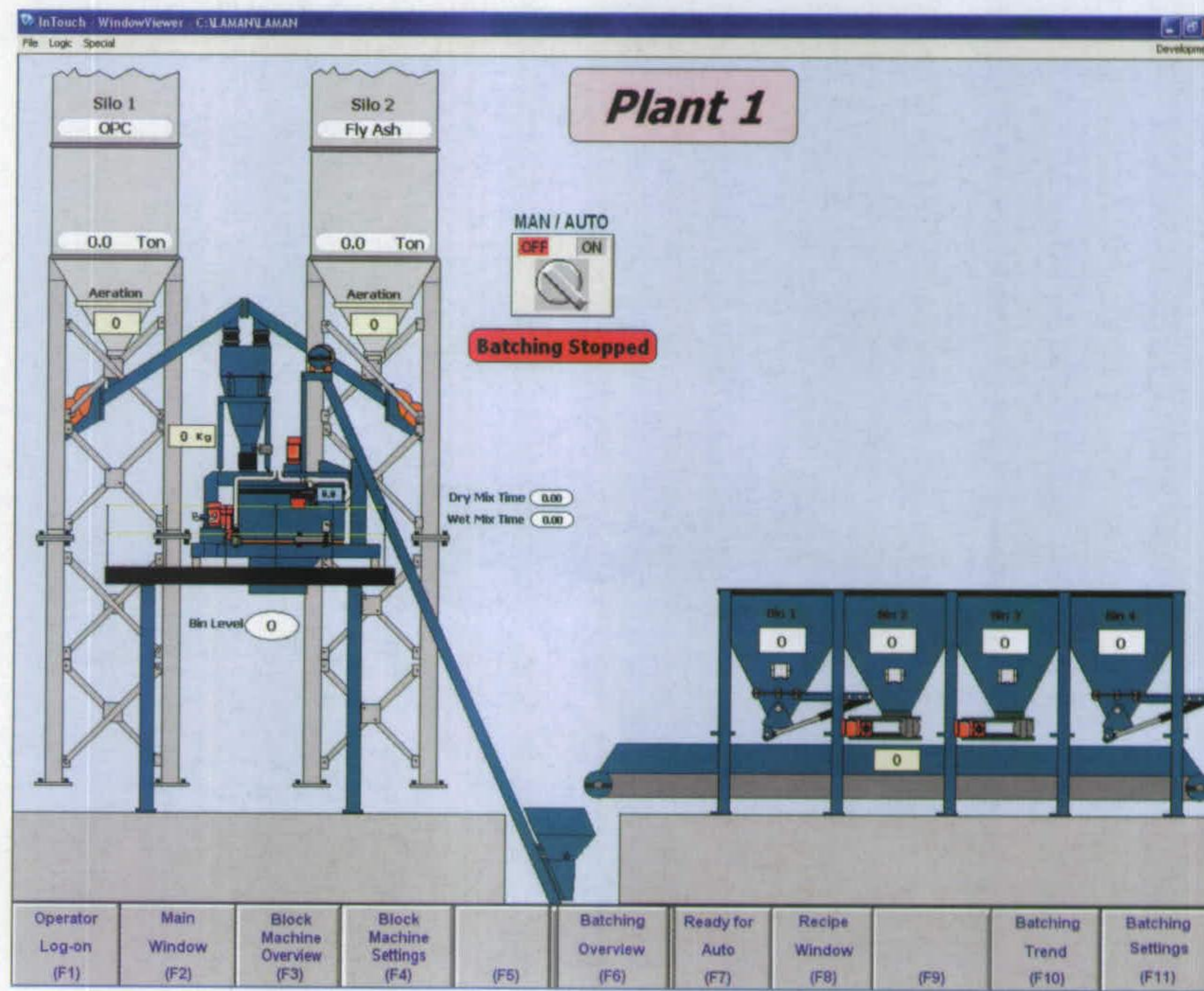
Effective plant management can be easily achieved with the help of custom-built computer software that is specifically designed to monitor the operational functions of all plant machinery.

**INNOVATIVE SOFTWARE** provided by Pan Mixers South Africa (PMSA) ensures that production plants function to full capacity; thereby, reducing the need for specialised supervision.

The Supervisory Control and Data Acquisition (SCADA) system – designed by leading industrial software solutions specialists, Wonderware, provides users with a custom-made computer programme to effectively monitor and control all operational functions at a production plant.

One of the key processes of the SCADA system, which was displayed and demonstrated at PMSA's second annual International Product Fair in September, is the ability to monitor an entire system in real time. This is facilitated by a Human Machine Interface (HMI), where data is processed before being viewed and monitored by the operator.

Highly-skilled programmers at PMSA have been developing SCADA systems in-house for the past eight years, and



are able to create software to suit customer requirements.

"This software can be tailor-made to optimise the PMSA range of industrial products, and an example of a typical application is a block plant with an automated weigh-batching system. When raw materials are weighed, the SCADA system will show exactly which materials are being weighed, and can report on operational faults that need to be addressed. All information can be remotely relayed to the user, who does not need to be anywhere near the site, so it maximises productivity and saves costs," explains PMSA director Walter Ebeling.

CEL Paving, a leading manufacturer of high-quality concrete paving products, has made use of a custom-made SCADA system from PMSA at both of its Cape Town plants for the past four years – a move which has dramatically increased productivity.

"In the past, it would have been impossible to determine what was going on at both of our plants simultaneously. With the introduction of the SCADA system, it can be done by simply looking at a screen from anywhere in the country," notes CEL Paving managing director Claude Gorgulhu.

CEL has a production capacity of up to 2 500 m<sup>2</sup> per day and technical faults, which usually pose a serious threat to productivity, can now be easily rectified online.

"Technical faults previously cost us a great amount of time and money. If a machine broke down – an engineer would have to be flown out to fix it. With the SCADA system, the problem can be identified and sorted out within a matter of minutes – saving the company both time and money," Gorgulhu concludes.

Wonderware is the leading supplier of industrial automation and information software solutions. With more than 450 000 software licenses sold in over 100 000 plants worldwide, Wonderware has customers in industries ranging from oil & gas, to utilities and pharmaceuticals.